

# SELF-CLOSING SAFETY GATE

## Swing Gate Model



Ideal for Stair Openings, Ladders and Platforms

The Protect-O-Gate Swing Gate is prefabricated and bolts to existing rail openings to provide a one-way, self-closing gate. It is a simple and economical solution to comply with OSHA regulations.

#### Features:

- Carbon steel construction (1 1/2" tubing).
- Painted safety yellow (Corrosion resistant finish available).
- Steel spring for self-closing actuation.
- Customized to fit any opening size.
- Opens 90°.
- Also available in 304 stainless steel construction.
- Designed to fit railings.
- Can be ordered to mount at right angle.
- Special gate widths will be quoted upon request (up to 60" wide)

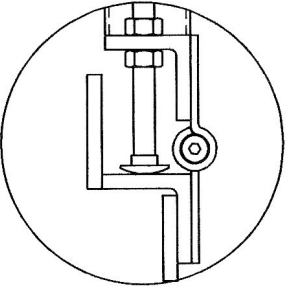
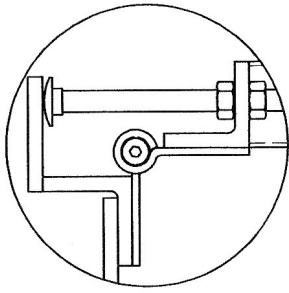
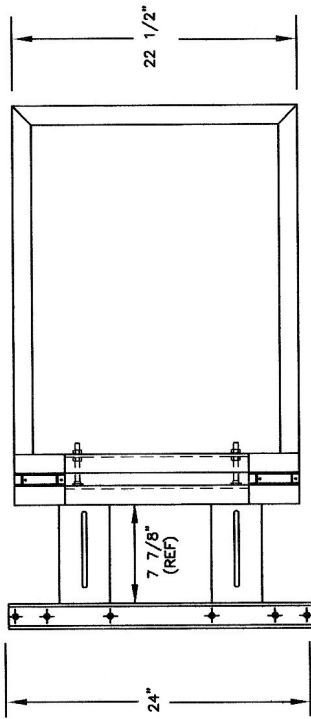
Gate Size	Fits Clear Opening*	Estimated Weight	Material	Cost
16	17" to 18 1/2"	34 lbs.	Carbon Steel	\$186.00
			CS w/corrosion resistant finish	\$210.00
			304 Stainless Steel	\$410.00
18	19" to 21 1/2"	35 lbs.	Carbon Steel	\$189.00
			CS w/corrosion resistant finish	\$213.00
			304 Stainless Steel	\$446.00
21	22" to 24 1/2"	35 lbs.	Carbon Steel	\$194.00
			CS w/corrosion resistant finish	\$218.00
			304 Stainless Steel	\$453.00
24	25" to 27 1/2"	36 lbs.	Carbon Steel	\$197.00
			CS w/corrosion resistant finish	\$221.00
			304 Stainless Steel	\$456.00
27	28" to 30 1/2"	36 lbs.	Carbon Steel	\$199.00
			CS w/corrosion resistant finish	\$223.00
			304 Stainless Steel	\$358.00
30	31" to 33 1/2"	37 lbs.	Carbon Steel	\$204.00
			CS w/corrosion resistant finish	\$228.00
			304 Stainless Steel	\$465.00
33	34" to 36 1/2"	37 lbs.	Carbon Steel	\$208.00
			CS w/corrosion resistant finish	\$232.00
			304 Stainless Steel	\$470.00
36	37" to 39 1/2"	38 lbs.	Carbon Steel	\$210.00
			CS w/corrosion resistant finish	\$234.00
			304 Stainless Steel	\$474.00

MEETS OSHA REQUIREMENTS

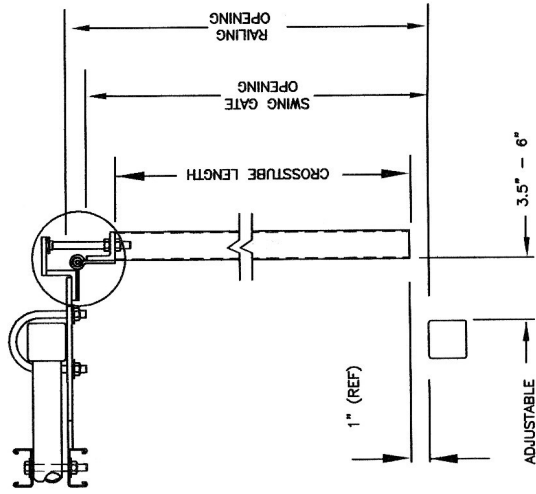
FOB our plant, Sheffield Village, OH 1-3 Week Delivery

## BENKO PRODUCTS INC.

5350 Evergreen Pkwy, Sheffield Village, Ohio 44054 (440)934-2180 Fax(440)934-4052  
[www.benkoproducts.com](http://www.benkoproducts.com) E-mail: [info@benkoproducs.com](mailto:info@benkoproducs.com)



TOP VIEW OF SWING GATE WITH 90° MOUNTING



TOP VIEW OF SWING GATE WITH INLINE MOUNTING

