

SPECIFICATIONS

Sahara Hot Box Model E16

The Hot Box has many unique features:

- Rugged steel construction
- Precise digital temperature control
- Portable. Just pick up with a forklift.
- Built-in spill containment.

CAPACITY

16 drums or 4 totes

MATERIALS OF CONSTRUCTION

All steel construction includes 12 gauge interior walls and 14 gauge exterior walls. Integrated framing and structural members ensure toughness. 304 stainless steel construction available.

DIMENSIONS

Interior dimensions (112" W x 55" D x 98" H) and exterior dimensions (119" W x 62" D x 118" H).

INSULATION

3" thick, 6# density mineral wool

HEATING MEDIUM

Electricity

HEAT CAPACITY

- 18KW (optional kw ratings available).
- 480 volt, 3 phase (additional voltages

available).

- Digital temperature controller with independent high temperature cut off.

TEMPERATURE RANGE

Room temperature to 350°F.

SPILL CONTAINMENT PAN

110 gallon capacity

FINISH

- Exterior finished with acrylic enamel.
- Interior finished with heat resistant silver.
- Stainless steel available.

WEIGHT

4,700 lbs.

INSTALLATION

Unit is shipped completely assembled. Simply set in place and hook up power supply.

AIR CIRCULATION

1020 cfm air circulation blower with controls. 3/4 HP, TEFC.

OPTIONAL

- 6" vent with damper
- Interior door latch
- Outdoor use package
- Chart recorder
- Door switch
- Adjustable timer

*Electric models not to be used to heat flammable or combustible materials.
*Electric models are not explosion proof rated and should not be used in hazardous locations.
*Class A ovens available for heating flammables.

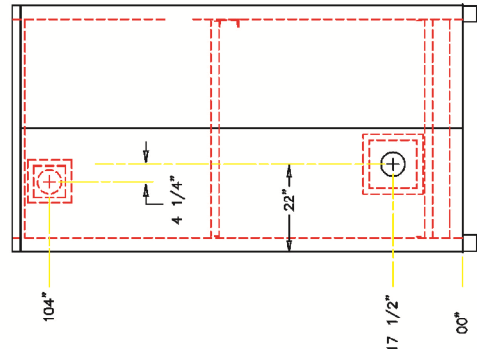
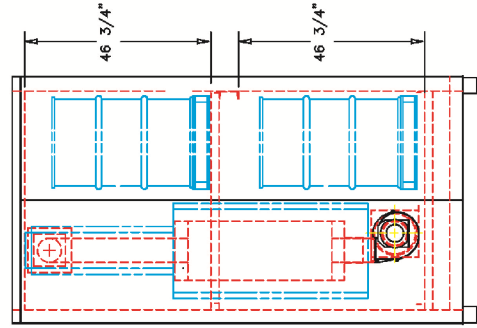
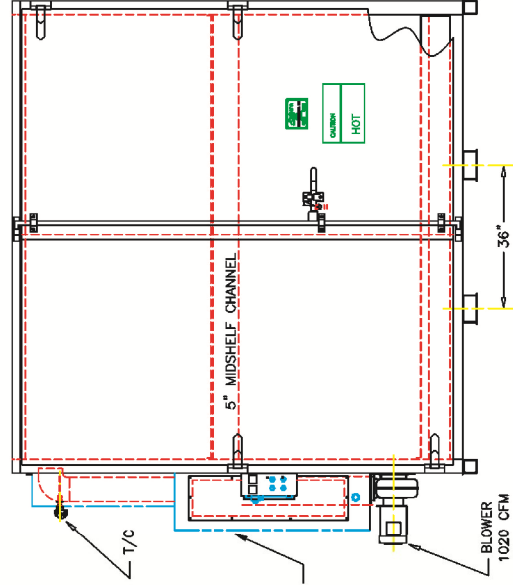
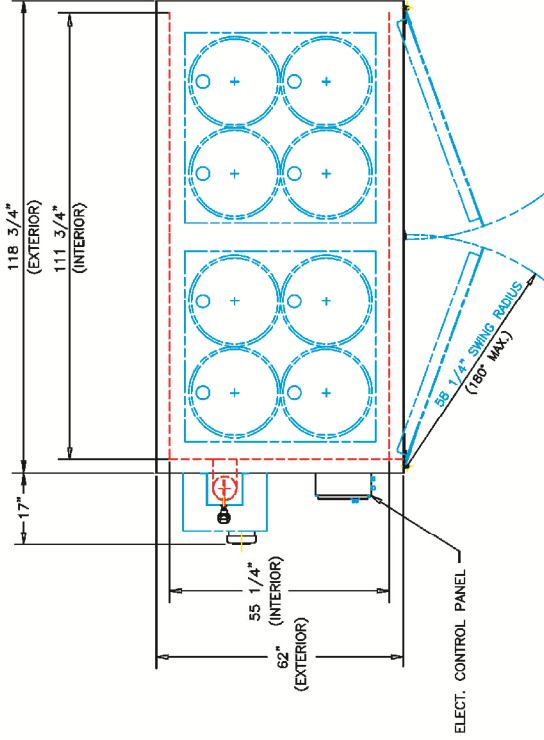


BENKO PRODUCTS INC.

SAHARA MODEL 20E16-CS

NOTES:

1. UNIT WEIGHT: 4700 Lbs. (AS SHOWN)
2. FINISH:
EXTERIOR: ACRYLIC ENAMEL
INTERIOR: HEAT RESISTANT SILVER
3. HEATING MEDIUM:
2.5KW ELECTRIC HEATING ELEMENTS
4. SPILL CONTAINMENT: 104 GALLONS
5. MATERIALS:
EXTERIOR: HRS, 14 GA. (.075")
INTERIOR: HRS, 12 GA. (.105")
FORMED CHANNEL GRATING
INSULATION: 3" X 6# DENSITY MINERAL WOOL
(ALL WALLS, FLOOR, CEILING AND DOORS)
6. OPTIONS:
1020CFM BLOWER (SHOWN)
3/4 HP - 240/480V - 3Ø - TEFC
MID-PALLET SHELF (SHOWN)



BENKO PRODUCTS, INC.	
5350 ENGINEER PKWY, SHEFFIELD VILLAGE, OHIO 44054	
SAHARA UNIT	20E16-CS
3 : 32	SH. 1 OF 1
TOLERANCES UNLESS SPECIFIED: DIMENSIONS IN INCHES DIMENSIONS IN MILLIMETERS	
7. ORDER NO.	J0000000