

Enclosures with Safety Interlock

>> [Hydra-Lift Drum Roller Video](#) <<

Enclosures with Safety Interlock Help You Comply with OSHA Requirements

([Hydra-Lift Drum Rollers](#) Sold Separately)



Enclosures for Morse Hydra-Lift Drum Rotators have a safety interlock to automatically shut off the drum roller when the gate is opened. Open the enclosure gate, secure your upright drum on the base plate, then close the gate to allow operation. An opening in the side of the enclosure provides access to the RAISE and ROTATE controls on the drum roller with the drum safely enclosed.

Outside post-to-post Dimensions:

L88" W40" H74" (224 x 102 x 188 cm)

Install all Morse Drum Rotators in accordance with OSHA requirements for enclosure and safety interlock, etc. Drum roller automatically turns off when enclosure door is opened.

For OSHA compliance, see OSHA subpart O.1910.212(a)(4) "Barrels, containers, and drums. Revolving drums, barrels, and containers shall be guarded by an enclosure which is interlocked with the drive mechanism, so that the barrel, drum, or container cannot revolve unless the guard enclosure is in place."

Power connections and motor controls must comply with applicable codes.

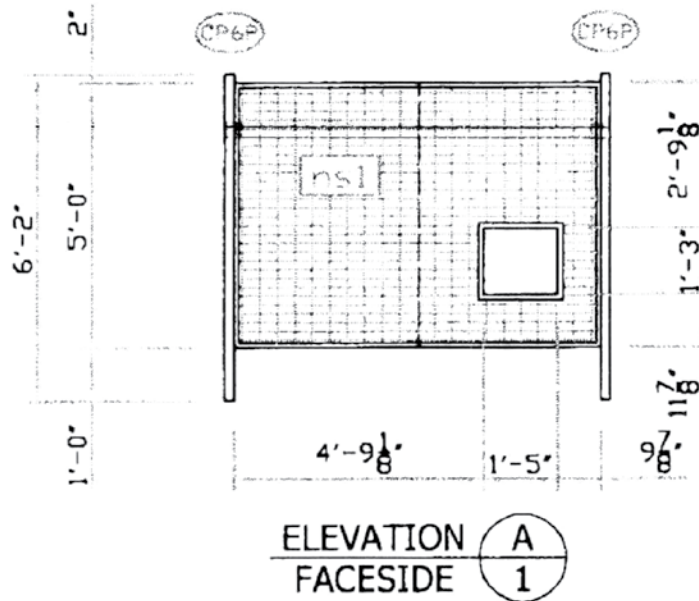
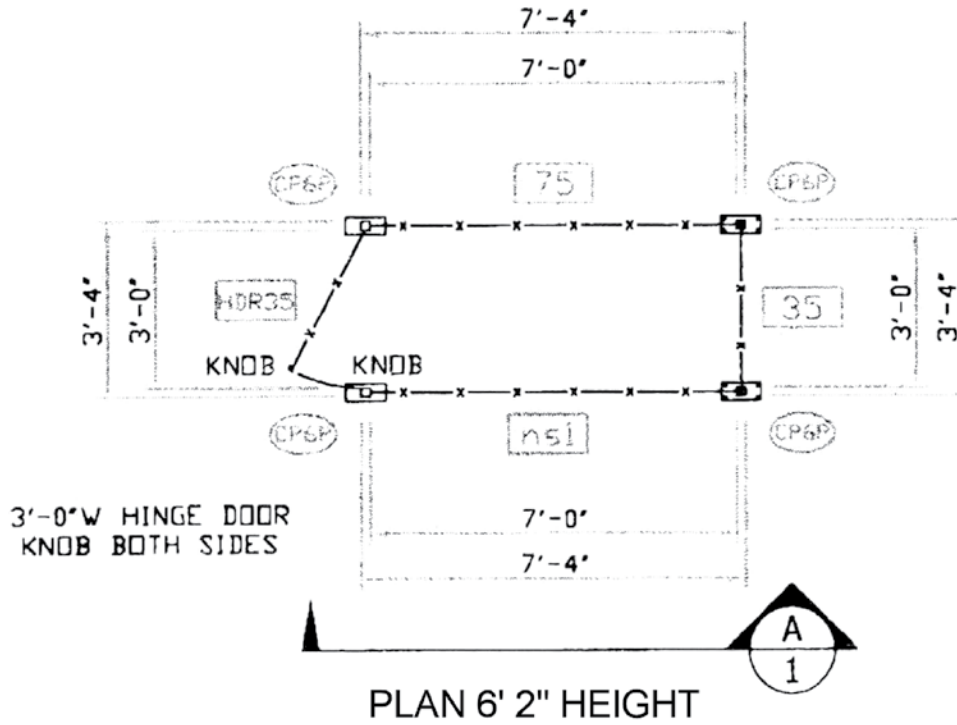
Guard Enclosure Kit	Fits Model # (sold separately)	Gate Switch	Ship Weight	Ship Dimensions
GEK-456-1-115	456-1-115	AC	400 Lb. (181 kg)	L101" W31" H66" (257 x 79 x 168 cm)
GEK-456-1-230	456-1-230	AC	400 Lb. (181 kg)	L101" W31" H66" (257 x 79 x 168 cm)
GEK-456-3-230	456-3-230	AC	400 Lb. (181 kg)	L101" W31" H66" (257 x 79 x 168 cm)
GEK-456-3-460	456-3-460	AC	400 Lb. (181 kg)	L101" W31" H66" (257 x 79 x 168 cm)
GEK-456-3-575	456-3-575	AC	400 Lb. (181 kg)	L101" W31" H66" (257 x 79 x 168 cm)
GEK-456-A	456-A	Air Switch	400 Lb. (181 kg)	L101" W31" H66" (257 x 79 x 168 cm)
GEK-456-E1-115	456-E1-115	AC Explosion proof *	450 Lb. (205 kg)	L101" W31" H66" (257 x 79 x 168 cm)
GEK-456-E1-230	456-E1-230	AC Explosion proof *	450 Lb. (205 kg)	L101" W31" H66" (257 x 79 x 168 cm)
GEK-456-E3-230	456-E3-230	AC Explosion proof *	450 Lb. (205 kg)	L101" W31" H66" (257 x 79 x 168 cm)
GEK-456-E3-460	456-E3-460	AC Explosion proof *	450 Lb. (205 kg)	L101" W31" H66" (257 x 79 x 168 cm)
GEK-456-1-220-50	456-1-220-50	AC	400 Lb. (181 kg)	L101" W31" H66" (257 x 79 x 168 cm)
GEK-456-3-220-50	456-3-220-50	AC	400 Lb. (181 kg)	L101" W31" H66" (257 x 79 x 168 cm)
GEK-456-3-380-50	456-3-380-50	AC	400 Lb. (181 kg)	L101" W31" H66" (257 x 79 x 168 cm)
GEK-456-3-440-50	456-3-440-50	AC	400 Lb. (181 kg)	L101" W31" H66" (257 x 79 x 168 cm)
GEK-456-E1-220-50	456-E1-220-50	AC Explosion proof *	450 Lb. (205 kg)	L101" W31" H66" (257 x 79 x 168 cm)
GEK-456-E3-220-50	456-E3-220-50	AC Explosion proof *	450 Lb. (205 kg)	L101" W31" H66" (257 x 79 x 168 cm)
GEK-456-E3-380-50	456-E3-380-50	AC Explosion proof *	450 Lb. (205 kg)	L101" W31" H66" (257 x 79 x 168 cm)
GEK-456-E3-440-50	456-E3-440-50	AC Explosion proof *	450 Lb. (205 kg)	L101" W31" H66" (257 x 79 x 168 cm)

* Explosion Proof rated for Class I Group D, and Class II Groups F and G

BENKO PRODUCTS INC.

MADE
IN
USA

Dimensions



Parts List			
Qty.	Width	Height	Description
1	3' 0" (91 cm)	5' 0" (152 cm)	Wire Mesh Panel
1	7' 0" (213 cm)	5' 0" (152 cm)	Wire Mesh Panel
1	2' 10-7/8" (89 cm)	5' 0" (152 cm)	Hinge Door
4	2" (61 cm)	6' 2" (188 cm)	Corner Post
1	7' 0" (213 cm)	5' 0" (152 cm)	Wire Mesh Panel with Cot Out

Please contact your Morse dealer

BENKO PRODUCTS, INC.
(440) 934-2180 Fax: (440) 934-4052
www.benkoproducts.com
Email: info@benkoproducts.com